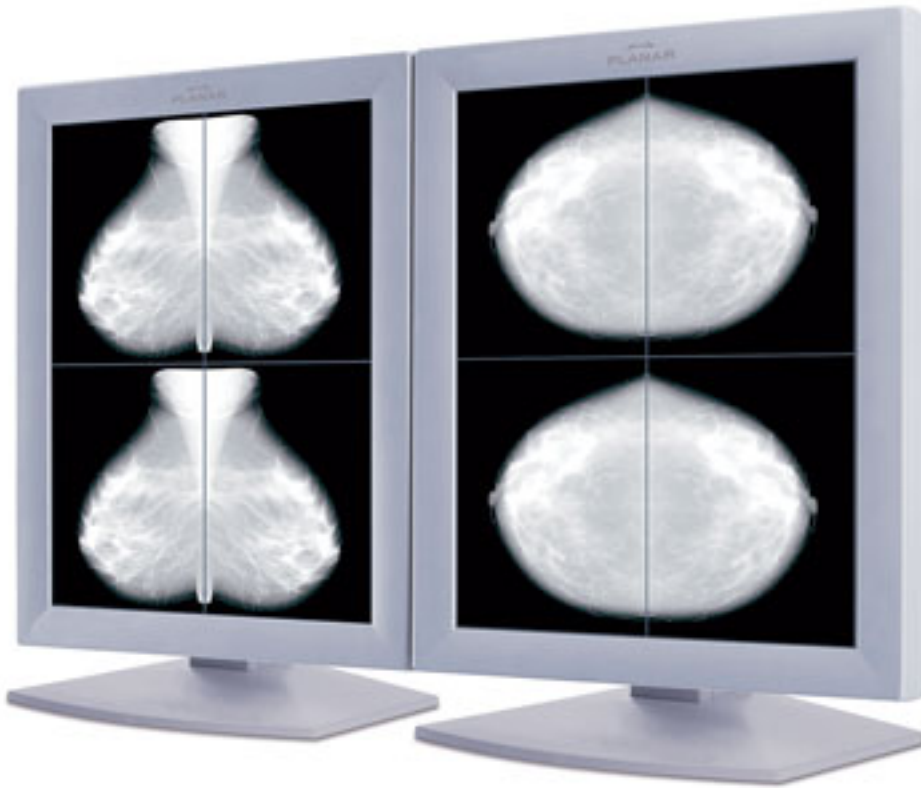


# Flat-Panel Display for Mammography



The flat-panel Dome C5i system for displaying and viewing mammograms exceeds industry standards for diagnostic quality resolution. It provides 3,061 distinct, displayable gray shades, which is nearly three times that of alternative 5MP flat-panel monitors. This provides for precise calibration to DICOM standards, and allows users to distinguish slight variations in a patient's radiograph. Because of its brightness, the Dome C5i can work equally well in bright areas as it does in dark radiology reading rooms.

**Source URL (retrieved on 01/31/2015 - 8:43pm):**

[http://www.surgicalproductsmag.com/product-releases/2005/07/flat-panel-display-mammography?qt-digital\\_editions=0&qt-recent\\_content=0](http://www.surgicalproductsmag.com/product-releases/2005/07/flat-panel-display-mammography?qt-digital_editions=0&qt-recent_content=0)