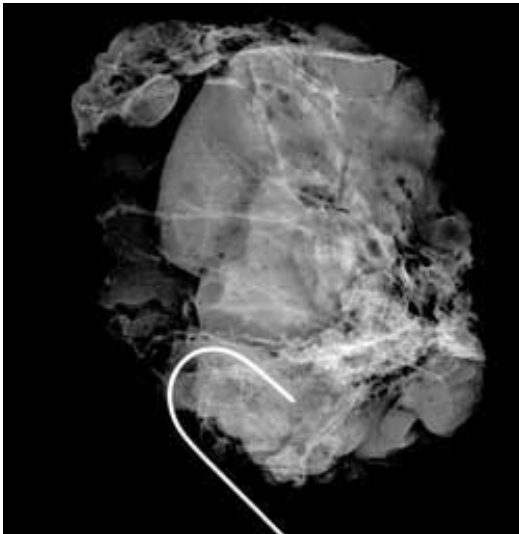


## Digital Mammography-Quality Imaging



KUBTEC, a provider of technology for digital specimen x-ray systems, has released its new DIGICOM 7.0 software suite with the XM-7 option. The XM-7 option, available for the XPERT 40, gives users the unprecedented ability to view surgically excised tissue with digital mammography-quality imaging.

This new software feature works with an algorithm designed to synthesize the ability of the human eye to locate information and analyze structures within an x-ray image. The result is digital mammography quality images with a digital radiography system. This detailed, high-resolution image quality is achieved by simultaneously enhancing fine structure while reducing noise. See attached images showing an excised breast tissue specimen, imaged on the XPERT 40 with and without XM-7.

KUBTEC's XPERT 40 digital x-ray systems are available with digital detectors from 2" x 2" up to 8" x 8." With an x-ray source up to 50kV, our systems offer high contrast and the ability to penetrate the densest tissue samples. All the XPERT systems come equipped with a number of software features: AEC, auto-calibration, automatic window leveling, and remote applications support. The full suite of user-friendly DICOM compliant image enhancement software provides the ability to identify minute details and subtle variations with superior images and the most innovative and reliable features on the market.

For more information, visit [www.kubtec.com](http://www.kubtec.com) [1]

**Source URL (retrieved on 01/26/2015 - 10:49pm):**

## **Digital Mammography-Quality Imaging**

Published on Surgical Products (<http://www.surgicalproductsmag.com>)

---

[http://www.surgicalproductsmag.com/product-releases/2011/01/digital-mammography-quality-imaging?qt-recent\\_blogs\\_articles=0&qt-digital\\_editions=0](http://www.surgicalproductsmag.com/product-releases/2011/01/digital-mammography-quality-imaging?qt-recent_blogs_articles=0&qt-digital_editions=0)

### **Links:**

[1] <http://www.kubtec.com/>